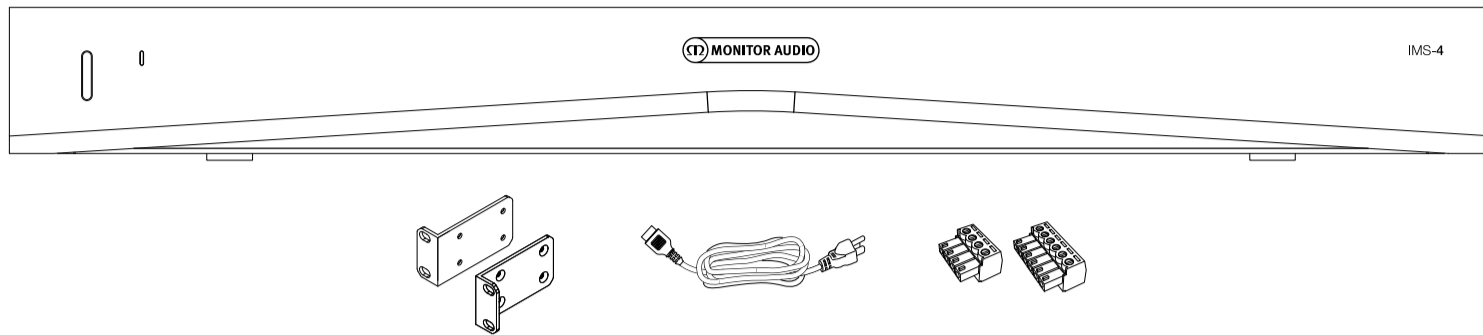


IMS-4 Music Player

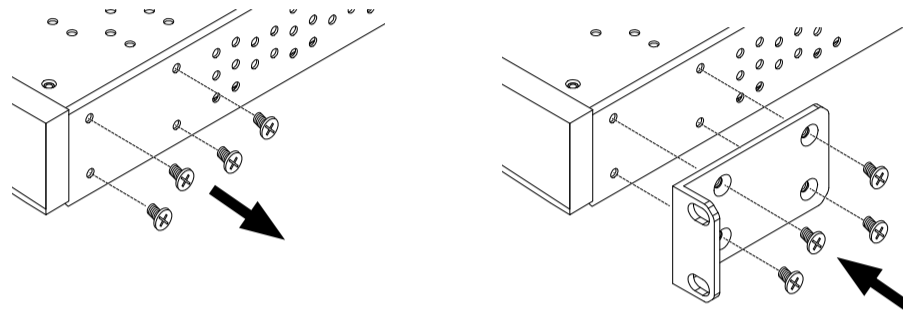
Quick Start Guide



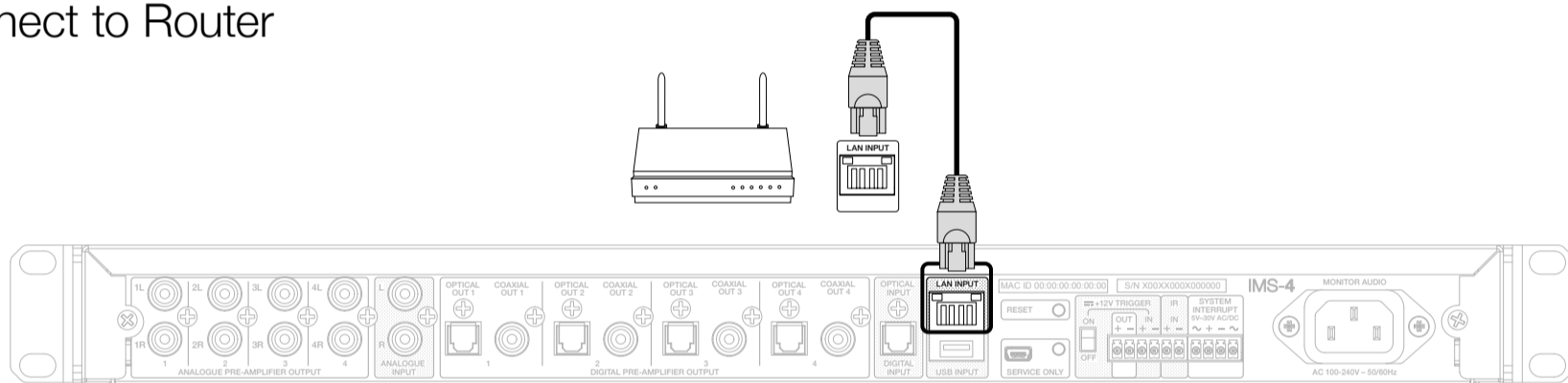
Contents



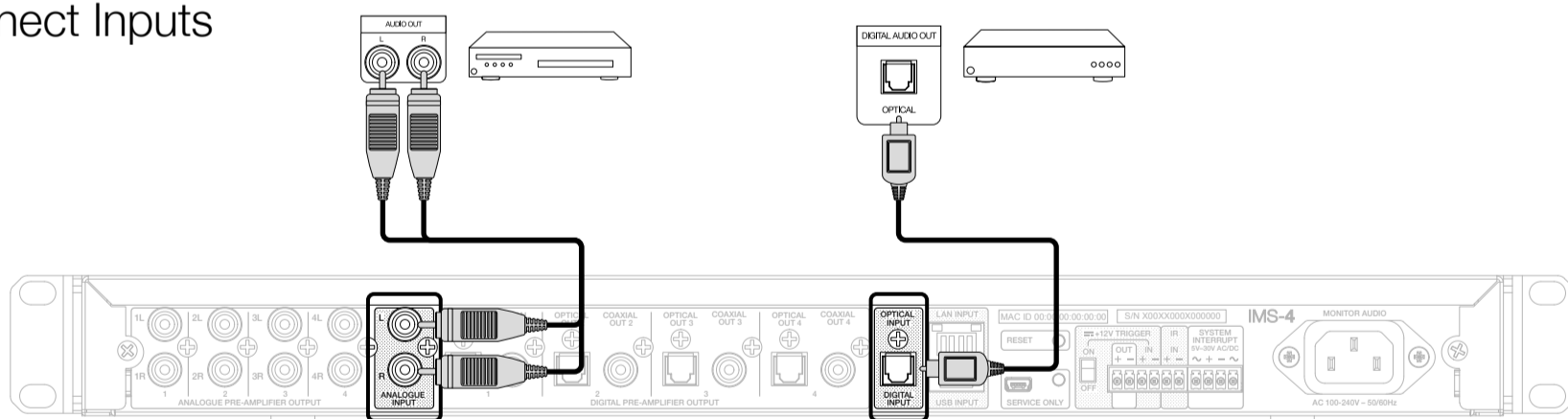
1. Attach Rack Brackets x 2



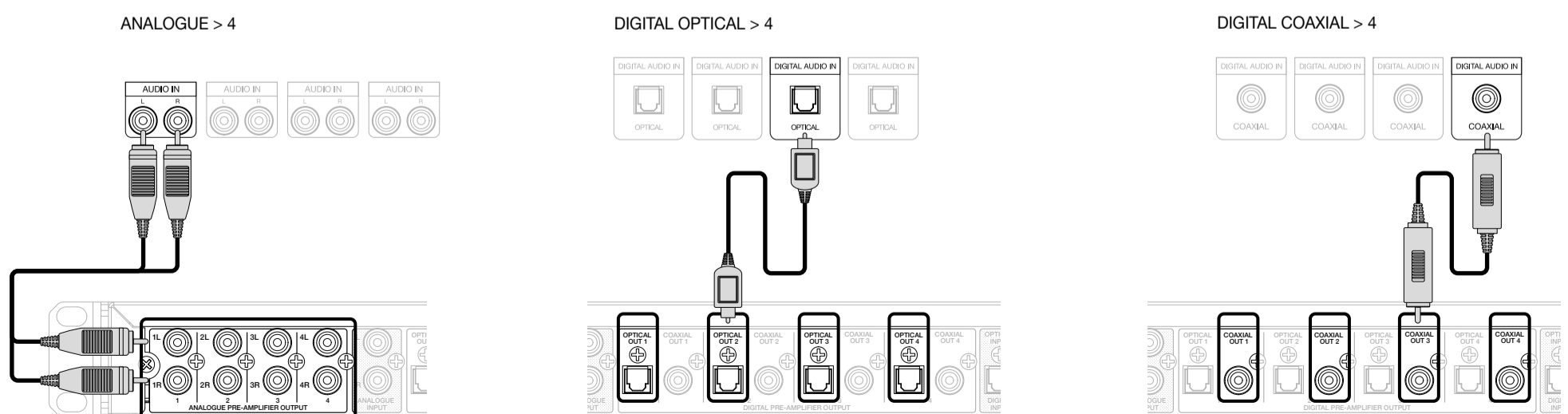
2. Connect to Router



3. Connect Inputs



4. Connect Outputs (1 2 3 4)

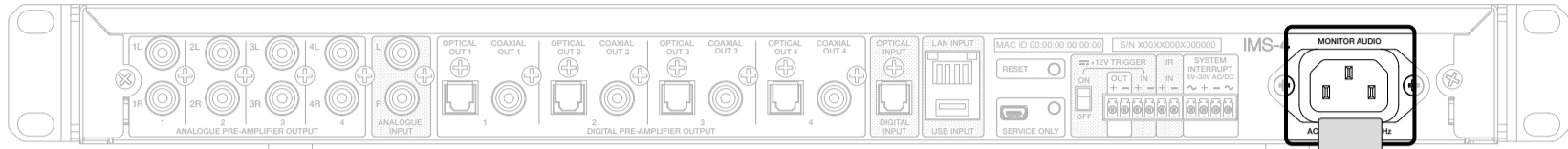


IMS-4 Music Player

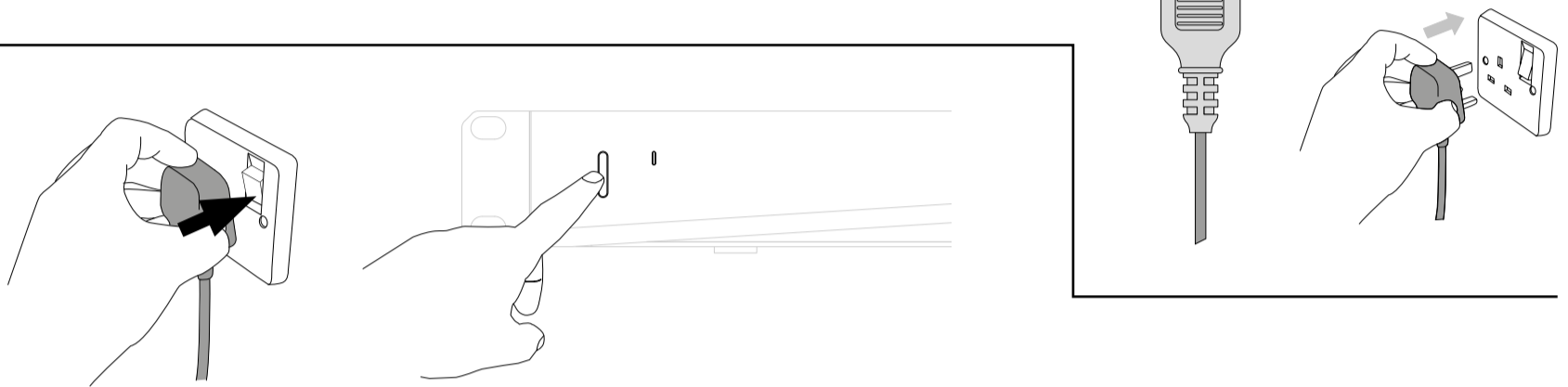
Quick Start Guide



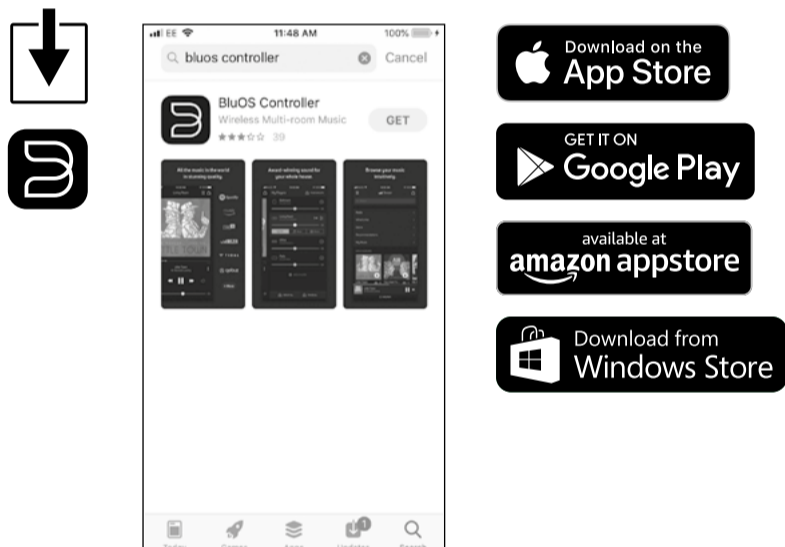
5. Connect Power



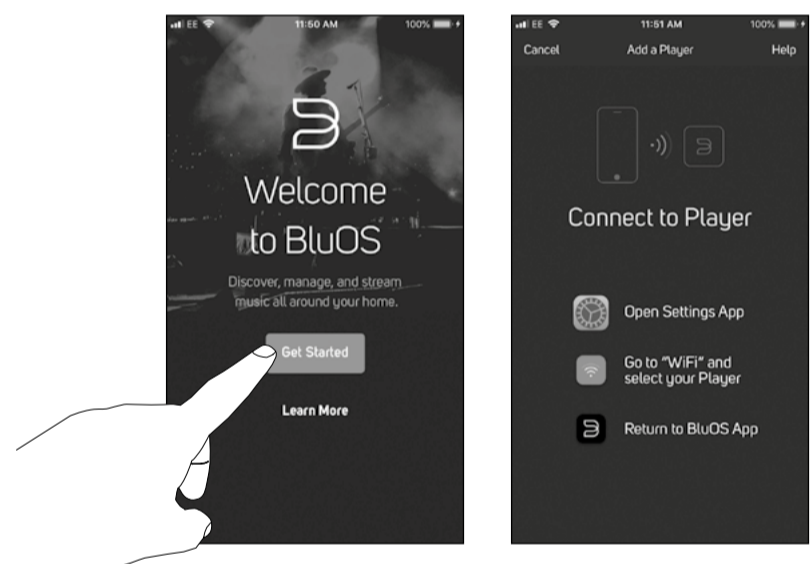
6. Turn On



7. Download – BluOS Controller App

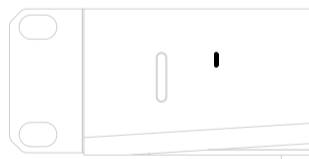


8. Set Up Player



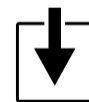
LED Status Indicator

This is an indicator of network connectivity. Below is a table of the LED blink codes and their corresponding descriptions.



LED BLINK CODE	DESCRIPTION
Solid red	Booting up
Solid pale blue	Indexing
Solid blue	Connected to network – ready to use with Bluesound App
Flashing green	No internet gateway
Alternate flashing red and green	Upgrade mode
Flashing red	Factory reset in progress

Download – User Manual



monitoraudio.com/ims-4-manual



For more information email info@monitoraudio.com
Additional technical details on our Installation Streamer and Amplifiers are available at www.monitoraudio.com

Monitor Audio is a wholly British owned and managed loudspeaker designer and manufacturer. Since 1972 it has been at the leading edge of loudspeaker design and technology, perfecting the implementation of metal drivers. It is renowned for exemplary speaker cabinet construction and finish.

MA CI IMS-4 Quick Start Guide V1 – 02/20

Monitor Audio Ltd
24 Brook Road,
Rayleigh, Essex,
SS6 7XJ England

T. + 44 (0)1268 740580

F. + 44 (0)1268 740589

E. info@monitoraudio.com